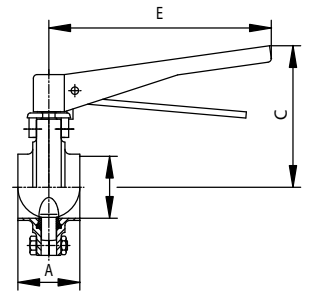


Prozess-Scheibenventil S-S

Process butterfly valve S-S

Art.-Nr. 24302	alle Preise in Euro / all prices in Euro				
	DN	1.4301/304		1.4404/316 L	
		manuell	pneum.	manuell	pneum.
10		140,50	330,50	182,40	372,40
15		140,50	330,50	182,40	372,40
20		140,50	330,50	182,40	372,40
25		92,20	282,20	110,70	300,20
32		94,50	284,50	113,50	303,40
40		95,50	285,50	114,70	304,70
50		101,50	308,40	121,80	328,60
65		126,30	332,10	151,60	358,40
80		176,80	383,60	212,10	418,90
100		223,30	430,10	268,00	474,80
125				617,60	1.101,30
150				882,80	1.356,00

Maße in mm / dimensions in mm				
A	B	C	D	E
40		101	26	180
42		104	32	180
50		107	38	180
50		114	50	180
50		123	66	180
60		131	81	180
64		141	100	180
112		157	125	240
114		194	150	320

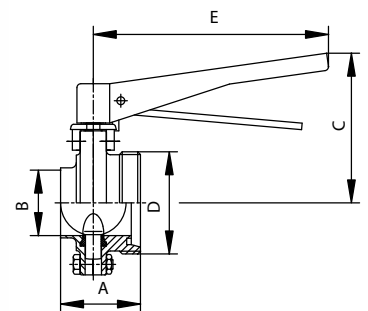


Prozess-Scheibenventil S-G

Process butterfly valve S-G

Art.-Nr. 24305	alle Preise in Euro / all prices in Euro				
	DN	1.4301/304		1.4404/316 L	
		manuell	pneum.	manuell	pneum.
25		94,40	284,40	113,30	303,20
32		96,00	285,80	115,10	305,00
40		96,70	286,70	116,10	306,10
50		104,40	311,20	125,30	332,10
65		131,40	338,30	157,80	364,60
80		185,70	392,50	222,90	429,70
100		228,40	435,20	274,10	480,90
125				632,20	1.115,90
150				883,40	1.377,10

Maße in mm / dimensions in mm				
A	B	C	D	E
			Rd.-Gew.	
52	26	101	52x1/6"	180
53	32	104	58x1/6"	180
61	38	107	65x1/6"	180
61	50	114	78x1/6"	180
63	66	123	95x1/6"	180
80	81	131	110x1/4"	180
84	100	141	130x1/4"	180
112	125	157	160x1/4"	240
114	150	194	190x1/4"	320

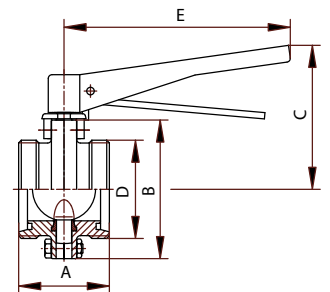


Prozess-Scheibenventil G-G

Process butterfly valve G-G

Art.-Nr. 24300	alle Preise in Euro / all prices in Euro				
	DN	1.4301/304		1.4404/316 L	
		manuell	pneum.	manuell	pneum.
10		142,40	332,20	170,80	360,70
15		142,40	332,20	170,80	360,70
20		142,40	332,20	116,10	360,70
25		96,70	286,70	170,50	306,00
32		97,30	287,10	116,60	306,60
40		98,20	288,00	117,70	307,60
50		107,30	314,10	128,70	335,50
65		136,80	343,60	164,10	370,90
80		194,50	401,30	233,50	467,50
100		230,80	437,60	278,00	483,80
125				639,60	1.123,30
150				889,00	1.382,80

Maße in mm / dimensions in mm				
A	B	C	D	E
			Rd.-Gew.	180
				180
				180
64	84	101	52x1/6"	180
64	90	104	58x1/6"	180
72	96	107	65x1/6"	180
72	110	114	78x1/6"	180
76	127	123	95x1/6"	180
100	142	131	110x1/4"	180
104	162	141	130x1/4"	180
				180
				320

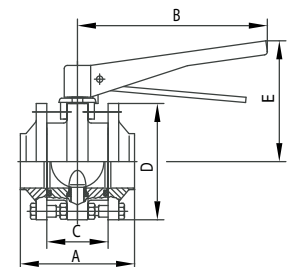


Prozess-Scheibenventil, Zwischenflanschausführung

Process butterfly valve, intermediate flange type

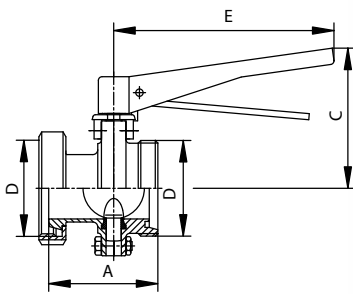
Art.-Nr. 24317	alle Preise in Euro / all prices in Euro				
	DN	1.4301/304		1.4404/316 L	
		manuell	pneum.	manuell	pneum.
25		134,10	324,10	161,00	350,90
32		144,70	334,70	173,60	363,50
40		147,80	337,60	177,30	367,20
50		152,90	359,70	183,50	390,30
65		194,60	401,40	233,60	440,40
80		263,60	470,40	316,30	523,10
100		329,80	536,60	395,80	602,60
125				1.097,20	1.580,90
150				1.594,40	2.078,90

Maße in mm / dimensions in mm				
A	B	C	D	E
104	180	64	84	101
106	180	64	90	104
108	180	58	96	107
108	180	58	110	114
108	180	58	127	123
144	180	84	142	131
148	180	84	162	141
146	180	157	160x1/4	240
151	320	194	190x1/4	320



Prozess-Scheibenventil K/M-G

Process butterfly valve K/M-G

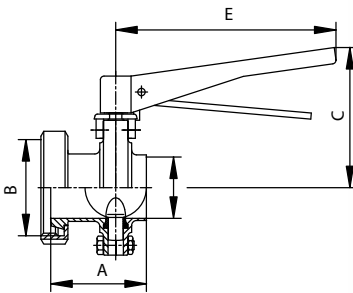


Art.-Nr. 24301 alle Preise in Euro / all prices in Euro				
DN	1.4301/304		1.4404/316 L	
	manuell	pneum.	manuell	pneum.
25	116,20	306,10	139,30	329,20
32	120,20	310,00	144,10	334,00
40	126,00	316,00	166,60	341,00
50	136,80	343,60	164,10	370,90
65	174,30	381,10	209,00	415,80
80	231,10	442,20	282,50	442,20
100	299,70	506,50	359,50	566,30
125			762,80	1.246,50
150			1.119,80	1.486,80

Maße in mm / dimensions in mm				
A	B	C	D	E
			Rd.-Gew.	
74		101	52x1/6"	180
78		104	58x1/6"	180
87		107	65x1/6"	180
89		114	78x1/6"	180
95		123	95x1/6"	180
117		131	110x1/4"	180
128		141	130x1/4"	180
164	240	84	200	157
164	320	84	230	194

Prozess-Scheibenventil K/M-S

Process butterfly valve K/M-S

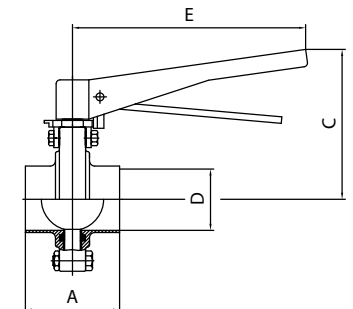


Art.-Nr. 24306 alle Preise in Euro / all prices in Euro				
DN	1.4301/304		1.4404/316 L	
	manuell	pneum.	manuell	pneum.
25	113,90	303,80	136,60	326,50
32	119,20	309,00	143,00	333,00
40	124,40	314,30	149,30	339,10
50	133,50	383,90	160,30	367,10
65	169,10	375,90	202,80	409,60
80	226,60	433,40	272,00	478,00
100	295,90	502,70	355,10	561,90
125			766,90	1.250,50
150			1.186,80	1.670,50

Maße in mm / dimensions in mm				
A	B	C	D	E
			Rd.-Gew.	
62	52x1/6"	101	26	180
67	58x1/6"	104	32	180
76	65x1/6"	107	38	180
78	78x1/6"	114	50	180
82	95x1/6"	123	66	180
97	110x1/4"	131	81	180
108	130x1/4"	141	100	180
114	160x1/4"	157	125	240
117	190x1/4"	194	150	320

Prozess-Scheibenventil S-S, Zoll

Process butterfly valve S-S, inch

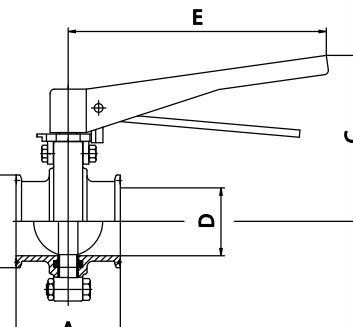


Art.-Nr. 74302 alle Preise in Euro / all prices in Euro				
DN	1.4301/304		1.4404/316 L	
	manuell	pneum.	manuell	pneum.
1"	94,10	284,10	112,90	302,80
1 1/2"	99,30	289,10	119,10	308,90
2"	105,50	312,30	126,70	333,50
2 1/2"	131,20	338,00	157,30	364,10
3"	183,20	390,00	219,80	426,60
4"			274,50	481,30
6"			946,80	1.430,60

Maße in mm / dimensions in mm				
A	B	C	D	E
64	180	25.4	22.1	101
72	180	38.1	34.8	107
72	180	50.8	47.5	114
76	180	63.5	60.2	123
100	180	76.2	72.9	131
104	180	101.6	97.4	141
114	320	152.4	146.8	194

Prozess-Scheibenventil CL-CL, Zoll

Process butterfly valve CL-CL, inch



Art.-Nr. 74330 alle Preise in Euro / all prices in Euro				
DN	1.4301/304		1.4404/316 L	
	manuell	pneum.	manuell	pneum.
1"	106,70	296,70	128,10	318,10
1 1/2"	113,10	303,10	136,00	325,60
2"	120,60	327,40	144,70	351,50
2 1/2"	131,90	338,70	158,30	365,10
3"	147,70	354,50	177,10	383,90
4"			263,10	469,90
6"			948,50	1.432,10

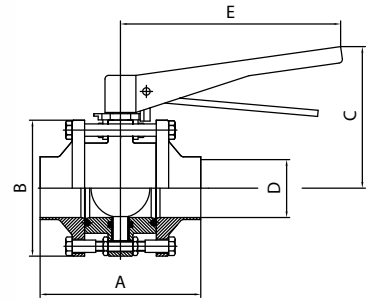
Maße in mm / dimensions in mm				
A	B	C	D	E
64	50.5	101	22.1	180
72	50.5	107	34.8	180
72	64	114	47.5	180
76	77.5	123	60.2	180
100	91	131	72.9	180
104	119	141	97.4	180
57	166.8	156.4	146.8	194

Prozess-Scheibenventil, Zwischenflanschausführung, Zoll

Process butterfly valve, intermediate flange type, inch

Art.-Nr. 74317 DN	alle Preise in Euro / all prices in Euro			
	1.4301/304		1.4404/316 L	
	manuell	pneum.	manuell	pneum.
1"	146,30	336,30	175,60	365,60
1 1/2"	160,00	349,80	191,90	382,60
2"	167,70	374,50	201,10	407,90
2 1/2"	204,40	411,20	245,30	452,00
3"	288,00	494,80	345,70	552,50
4"			439,80	646,60
6"			1.830,20	2.764,00

Maße in mm / dimensions in mm				
A	B	C	D	E
128	180	64	84	101
130	180	58	96	107
130	180	58	110	114
134	180	58	127	123
184	180	84	142	131
188	180	84	162	141
57	166,8	156,4	146,8	194

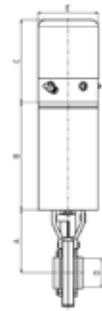


Prozess-Regelscheibenventil Typ VSR

Process modulating butterfly valve type VSR

DN	alle Preise in Euro / all prices in Euro	
	1.4301/304	1.4404/316 L
	ZwFl ³	ZwFl ³
25	1.454,60	1.479,00
32	1.464,20	1.490,40
40	1.466,90	1.493,80
50	1.487,00	1.514,80
65	1.524,90	1.560,30
80	1.587,60	1.635,50
100	1.647,80	1.707,80
125	2.430,90	2.597,10
150	3.250,00	3.490,00

Maße in mm / dimensions in mm				
A	B	C	D	E
74	136	141	26	102
74	136	141	32	102
74	136	141	38	102
85	186	141	50	102
94	186	141	66	102
101	186	141	81	102
112	186	141	100	102
129	224	141	125	102
143	224	141	150	102



¹S-S=Schweiß-Schweiß (24301), ²G-G=Gewinde-Gewinde (24300), ³ZwFl=Zwischenflansch (24317). Weitere Ausführungen auf Anfrage.

Mit elektro-pneumatischem Stellungsregler 4-20 mA.

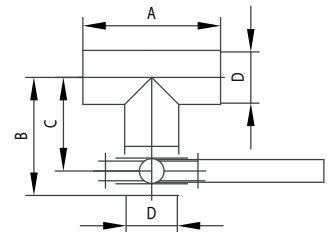
¹S-S=weld ends (24301), ²G-G=thread ends (24300), ³ZwFl=intermediate flanges (24317). Other versions on demand. With electro-pneumatic positioner 4-20 mA.

Prozess-Mehrwegescheibenventil S-S-S

Process multi-way butterfly valve S-S-S

Art.-Nr. 24320 DN	alle Preise in Euro / all prices in Euro			
	1.4301/304		1.4404/316 L	
	manuell	pneum.	manuell	pneum.
25	118,70	309,00	143,00	333,00
40	130,70	320,70	156,90	346,80
50	143,50	350,30	172,10	378,90
65	176,60	383,40	211,90	418,70
80	239,50	446,30	287,40	494,20
100	299,80	506,60	359,70	566,50

Maße in mm / dimensions in mm				
A	B	C	D	E
100	90	70	26	
120	110	85	38	
140	120	95	50	
160	130	105	66	
180	150	120	81	
200	164	132	100	



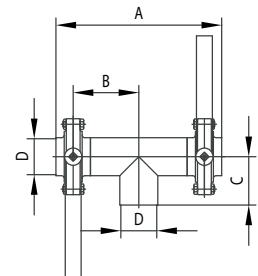
Andere Anschlüsse auf Anfrage
Other connections on demand

Prozess-Mehrwegescheibenventil S-S-S

Process multi-way butterfly valve S-S-S

Art.-Nr. 24322 DN	alle Preise in Euro / all prices in Euro			
	1.4301/304		1.4404/316 L	
	manuell	pneum.	manuell	pneum.
25	226,20	607,00	271,40	651,20
40	247,20	627,00	296,60	676,50
50	269,90	683,50	323,80	737,40
65	327,70	741,30	393,30	806,90
80	542,30	857,90	533,90	946,80
100	551,10	964,70	661,40	1.075,00

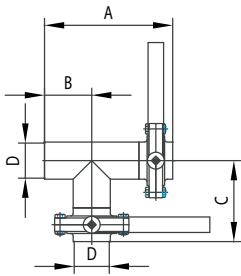
Maße in mm / dimensions in mm				
A	B	C	D	E
180	70	50	26	
220	85	60	38	
240	95	70	50	
260	105	80	66	
300	120	90	81	
328	132	100	100	



Andere Anschlüsse auf Anfrage
Other connections on demand

Prozess-Mehrwegescheibenventil S-S-S

Process multi-way butterfly valve S-S-S



Art.-Nr. 24323		alle Preise in Euro / all prices in Euro			
DN	1.4301/304		1.4404/316 L		
	manuell	pneum.	manuell	pneum.	
25	226,20	606,00	271,40	651,20	
40	247,20	627,00	296,60	676,50	
50	269,90	683,50	323,80	737,40	
65	327,70	741,30	393,30	806,90	
80	542,30	857,90	533,20	946,80	
100	551,10	964,70	661,40	1.075,00	

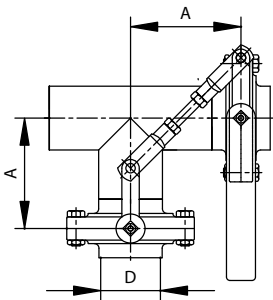
Maße in mm / dimensions in mm

A	B	C	D	E
140	50	90	26	
170	60	110	38	
190	70	120	50	
210	80	130	66	
240	90	150	81	
264	100	164	100	

Andere Anschlüsse auf Anfrage
Other connections on demand

Prozess-Scheibenventil-Schaltkombination S-S-S

Process butterfly valve switching combination S-S-S



Art.-Nr. 24381		alle Preise in Euro / all prices in Euro			
DN	1.4301/304		1.4404/316 L		
	manuell	pneum.	manuell	pneum.	
25	324,00	514,00	388,80	578,60	
40	345,00	535,00	414,00	603,90	
50	367,70	574,50	441,10	647,90	
65	425,50	632,30	510,70	717,50	
80	542,10	748,90	650,60	857,40	
100	673,50	880,20	808,10	1.014,90	

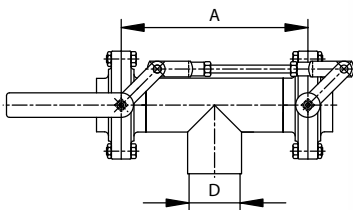
Maße in mm / dimensions in mm

A	B	C	D	E
70			26	
85			38	
95			50	
105			66	
120			81	
132			100	

Andere Anschlüsse auf Anfrage
Other connections on demand

Prozess-Scheibenventil-Schaltkombination S-S-S

Process butterfly valve switching combination S-S-S



Art.-Nr. 24383		alle Preise in Euro / all prices in Euro			
DN	1.4301/304		1.4404/316 L		
	manuell	pneum.	manuell	pneum.	
25	324,00	514,00	388,80	578,60	
40	345,00	535,00	414,00	604,00	
50	367,70	574,50	441,10	647,90	
65	425,50	632,30	510,70	717,50	
80	542,10	748,90	650,60	857,40	
100	673,50	880,30	808,10	1.014,90	

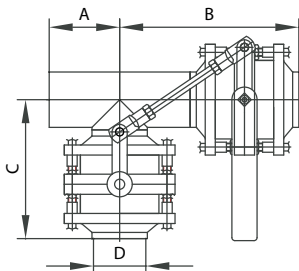
Maße in mm / dimensions in mm

A	B	C	D	E
140			26	
170			38	
190			50	
210			66	
240			81	
264			100	

Andere Anschlüsse auf Anfrage
Other connections on demand

Prozess-Scheibenventil-Schaltkombination, Zwischenflanschversion

Process multi-way-butterfly valve for intermediate flange



Art.-Nr. 24384		alle Preise in Euro / all prices in Euro			
DN	1.4301/304		1.4404/316 L		
	manuell	pneum.	manuell	pneum.	
25	407,80	597,80	489,30	679,30	
40	449,40	639,40	539,30	729,10	
50	470,50	677,30	564,60	771,40	
65	562,10	768,90	674,60	881,40	
80	715,70	972,00	858,80	1.065,60	
100	886,30	1.093,10	1.063,50	1.270,30	

Maße in mm / dimensions in mm

A	B	C	D	E
50	154	119,5	26	
60	168	131	38	
70	178	138	50	
80	188	148	66	
90	234	190,5	81	
100	248	206	100	

Andere Anschlüsse auf Anfrage
Other connections on demand

Scheibenventile & Kugelhähne

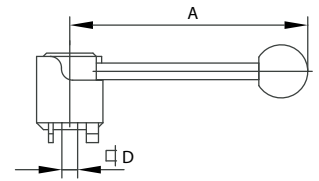
butterfly valves & ball valves

Zuggriff

Pull handle

Art.-Nr. 04341		alle Preise in Euro / all prices in Euro
DN	1.4301/304	
10-25	23,00	
32	23,00	
40	23,00	
50	23,00	
65	23,00	
80	23,00	
100	23,00	
125	76,20	
150	81,80	

Maße in mm / dimensions in mm				
A	B	C	D	E
145			9,5	
145			9,5	
145			9,5	
145			9,5	
145			9,5	
185			9,5	
185			12	
265			12	
265			14	

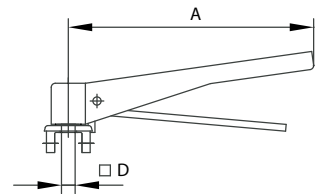


Zangengriff

Trigger handle

Art.-Nr. 04340		alle Preise in Euro / all prices in Euro
DN	1.4301/304	
10-25	23,00	
32	23,00	
40	23,00	
50	23,00	
65	23,00	
80	23,00	
100	23,00	
125	76,20	
150	81,80	

Maße in mm / dimensions in mm				
A	B	C	D	E
180			9,5	
180			9,5	
180			9,5	
180			9,5	
180			9,5	
180			9,5	
180			12	
240			12	
320			14	

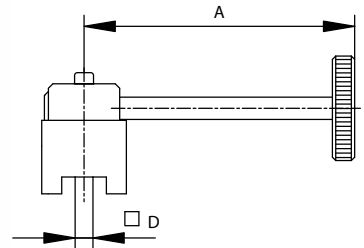


Handgriff, stufenlos arretierbar

Handle with variably adjustable locking

Art.-Nr. 04346		alle Preise in Euro / all prices in Euro
DN	1.4301/304	
10-25	47,80	
32	52,60	
40	52,60	
50	52,60	
65	52,60	
80	52,60	
100	63,60	
125	110,00	
150	122,00	

Maße in mm / dimensions in mm				
A	B	C	D	E
145			9,5	
145			9,5	
145			9,5	
145			9,5	
145			9,5	
185			9,5	
185			12	
265			12	
265			14	

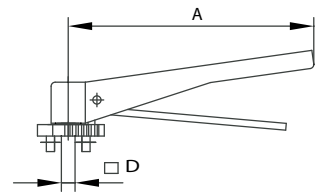


Zangengriff mit Feinrasterung

Trigger handle with intermediate notches

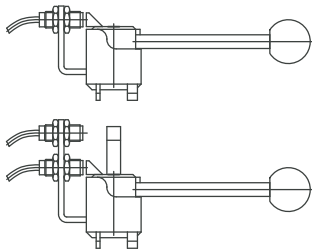
Art.-Nr. 04344		alle Preise in Euro / all prices in Euro
DN	1.4301/304	
10-25	27,20	
32	27,20	
40	27,20	
50	27,20	
65	27,20	
80	27,20	
100	27,20	
125	91,30	
150	98,10	

Maße in mm / dimensions in mm				
A	B	C	D	E
180			9,5	
180			9,5	
180			9,5	
180			9,5	
180			9,5	
180			9,5	
180			12	
180			12	
265			12	
265			14	



Zuggriff für Rückmeldung

Pull handle with holder for proximity switches

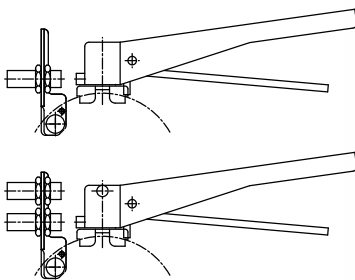


Art.-Nr. 04342			alle Preise in Euro / all prices in Euro	
DN	einfach	doppelt		
10-80	46,20	59,40		
100	76,60	99,00		
125-150	136,90	172,00		

Maße in mm / dimensions in mm				
A	B	C	D	E

Zangengriff für Rückmeldung

Trigger handle with holder for proximity switches

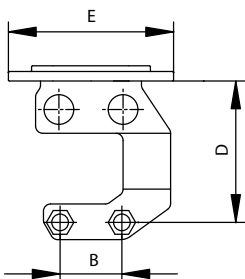


Art.-Nr. 04345			alle Preise in Euro / all prices in Euro	
DN	einfach	doppelt		
10-80	46,20	59,40		
100	76,60	99,00		
125-150	136,90	172,00		

Maße in mm / dimensions in mm				
A	B	C	D	E

Halterung für pneumatischen Antrieb PS 0 für Prozess-Scheibenventile

Bracket for actuator PS 0 for process butterfly valves

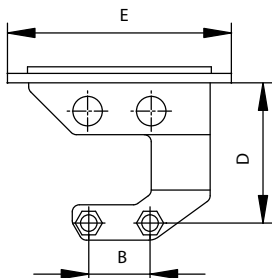


Art.-Nr. 24367			alle Preise in Euro / all prices in Euro	
DN				
25				
32				
40				

Maße in mm / dimensions in mm				
A	B	C	D	E
				Ø
	26		59.5	69.5
	26		59.5	69.5
	26		59.5	69.5

Halterung für pneumatischen Antrieb PS 2 für Prozess-Scheibenventile

Bracket for actuator PS 2 for process butterfly valves



Art.-Nr. 6470 4751.00			alle Preise in Euro / all prices in Euro	
DN				
25			27,50	
32			27,50	
40			27,50	
50			27,50	
65			27,50	
80			27,50	
100			27,50	

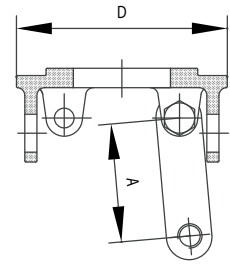
Maße in mm / dimensions in mm				
A	B	C	D	E
				Ø
	26		59.5	95
	26		59.5	95
	26		59.5	95
	26		59.5	95
	26		59.5	95
	26		59.5	95
	26		59.5	95

Halterung für pneumatischen Antrieb PS 0

Bracket for actuator PS 0

Art.-Nr. 6470 4750.00		alle Preise in Euro / all prices in Euro
DN		1.4301/304
25 / 1"		
32		
40 / 1 1/2"		

Maße in mm / dimensions in mm				
A	B	C	D	E
			Ø	
39			69.5	
39			69.5	
39			69.5	

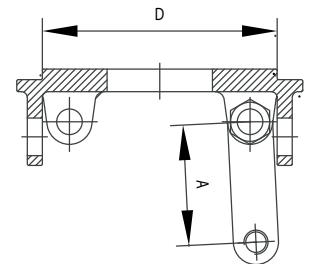


Halterung für pneumatischen Antrieb PS 2

Bracket for actuator PS 2

Art.-Nr. 04368		alle Preise in Euro / all prices in Euro
DN		1.4301/304
25 / 1"		27,50
32		27,50
40 / 1 1/2"		27,50
50 / 2"		27,50
65 / 2 1/2"		27,50
80 / 3"		27,50
100 / 4"		27,50

Maße in mm / dimensions in mm				
A	B	C	D	E
			Ø	
36.8			95	
36.8			95	
36.8			95	
39.4			95	
43.3			95	
34.7			95	
37.5			95	

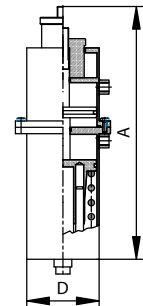


Pneumatischer Antrieb Luft/Feder (L/F) mit Stellungsbegrenzung

Pneumatic actuator air/spring (L/F) with position limitation

Art.-Nr. 04366		alle Preise in Euro / all prices in Euro
DN		1.4301/304
PS R 0		*
PS R 2		*
PS R 3		*

Maße in mm / dimensions in mm				
A	B	C	D	E
280			76	
360			102	
390			133	

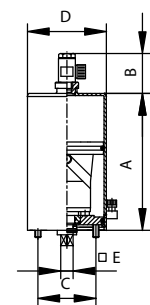


Pneumatischer Antrieb Luft/Luft (L/L) für Prozess-Scheibenventile

Pneumatic actuator air/air (L/L) for process butterfly valves

Art.-Nr. 24360		alle Preise in Euro / all prices in Euro
DN		1.4301/304
PS0		190,00
PS2		206,80
PS3		483,80
PS4		*

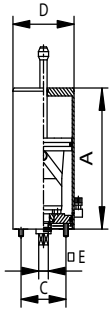
Maße in mm / dimensions in mm				
A	B	C	D	E
132	34	50	76	12
182	42	75	102	12
220	42	75	133	12
290	42	120	168	12



Bei Bestellung bitte Ventilvariante und Nennweite angeben
Please specify valve type and size when placing order

Pneumatischer Antrieb Luft/Luft (L/L), StK.-Version für Prozess-Scheibenventile

Pneumatic actuator air/air (L/L), control head version, for process butterfly valves



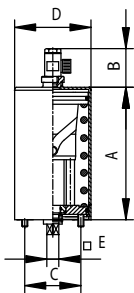
Art.-Nr. F4360		alle Preise in Euro / all prices in Euro
DN		1.4301/304
PS0		201,50
PS2		218,80
PS3		514,70

Maße in mm / dimensions in mm				
A	B	C	D	E
132		50	76	12
182		75	102	12
220		75	133	12

Bei Bestellung bitte Ventilvariante und Nennweite angeben
Please specify valve type and size when placing order

Pneumatischer Antrieb Luft/Feder (L/F) für Prozess-Scheibenventile

Pneumatic actuator air/spring (L/F) for process butterfly valves



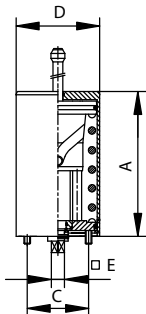
Art.-Nr. 24361		alle Preise in Euro / all prices in Euro
DN		1.4301/304
PS0		190,00
PS2		206,80
PS3		483,80

Maße in mm / dimensions in mm				
A	B	C	D	E
132	34	50	76	12
182	42	75	102	12
220	42	75	133	12

Bei Bestellung bitte Ventilvariante und Nennweite angeben
Please specify valve type and size when placing order

Pneumatischer Antrieb Luft/Feder (L/F), StK.-Version für Prozess-Scheibenventile

Pneumatic actuator air/spring (L/F), control head version, for process butterfly valves



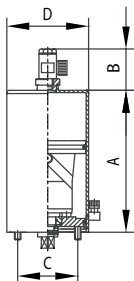
Art.-Nr. F4361		alle Preise in Euro / all prices in Euro
DN		1.4301/304
PS0		201,90
PS2		206,80
PS3		483,80
PS4		*

Maße in mm / dimensions in mm				
A	B	C	D	E
132		50	76	12
182		75	102	12
220		75	133	12
290	120	168	12	

Bei Bestellung bitte Ventilvariante und Nennweite angeben
Please specify valve type and size when placing order

Pneumatischer Antrieb Luft/Luft (L/L)

Pneumatic actuator air/air (L/L)



Art.-Nr. 04360		alle Preise in Euro / all prices in Euro
DN		1.4301/304
PS0		190,00
PS2		206,80
PS3		483,80
PS4		*

Maße in mm / dimensions in mm				
A	B	C	D	E
				für DN ¹
132	34	50	76	25-40
182	42	75	102	50-100
220	42	75	133	125-150
290	42	120	168	

Bei Bestellung bitte Ventilvariante und Nennweite angeben
¹for valve sizes / Please specify valve type and size when placing order

Pneumatischer Antrieb Luft/Luft (L/L), StK.-Version

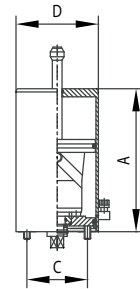
Pneumatic actuator air/air (L/L), control head version

Art.-Nr. F4360		alle Preise in Euro / all prices in Euro
DN	1.4301/304	
PS0	201,90	
PS2	218,80	
PS3	514,70	
PS4	*	

Maße in mm / dimensions in mm

A	B	C	D	E
				für DN ¹
132		50	76	10-40
182		75	102	50-100
220		75	133	125-150
290		120	168	

Bei Bestellung bitte Ventilvariante und Nennweite angeben
¹for valve sizes / Please specify valve type and size when placing order



Pneumatischer Antrieb Luft/Feder (L/F)

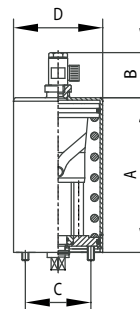
Pneumatic actuator air/spring (L/F)

Art.-Nr. 04361		alle Preise in Euro / all prices in Euro
DN	1.4301/304	
PS0	190,00	
PS2	206,80	
PS3	483,80	
PS4	*	

Maße in mm / dimensions in mm

A	B	C	D	E
				für DN ¹
132	34	50	76	25-40
182	42	75	102	50-100
220	42	75	133	125-150
290	42	120	168	

Bei Bestellung bitte Ventilvariante und Nennweite angeben
¹for valve sizes / Please specify valve type and size when placing order



Pneumatischer Antrieb Luft/Feder (L/F), StK.-Version

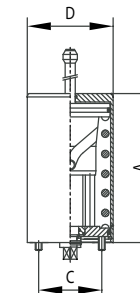
Pneumatic actuator air/spring (L/F), control head version

Art.-Nr. F4361		alle Preise in Euro / all prices in Euro
DN	1.4301/304	
PS0	201,90	
PS2	218,80	
PS3	514,70	
PS4	*	

Maße in mm / dimensions in mm

A	B	C	D	E
				für DN ¹
132		50	76	10-40
182		75	102	50-100
220		75	133	125-150
290		120	168	

Bei Bestellung bitte Ventilvariante und Nennweite angeben
¹for valve sizes / Please specify valve type and size when placing order



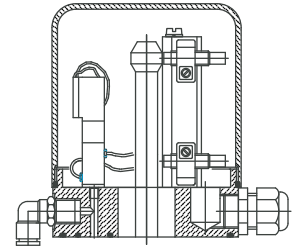
Steuerkopf für pneumatischen Antrieb

Control head for pneumatic actuator

Art.-Nr. 03174		alle Preise in Euro / all prices in Euro
DN		.
		*

Maße in mm / dimensions in mm				
A	B	C	D	E
102				127

Komplett mit sämtlichen Kabelanschlüssen. Steuerventil: wahlweise als 3/2- bzw. 5/2-Wege-Magnetventil. Ein- oder zweifacher Näherungsschalter oder Mikroschalter. Optional ein oder zwei Leuchtdioden am Gehäuse zur visuellen Stellungsanzeige.
 Complete with all cable connections. Control valve: by choice 3/2- or 5/2-way solenoid valve. One or two proximity or micro switches. Optionally one or two illuminated diodes at the casing for an individual position indication.



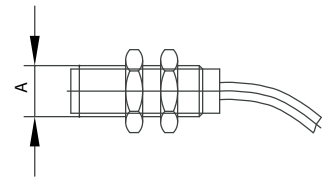
Näherungsinitiator für Steuerkopf

Proximity Switch for control head

Art.-Nr. 6470 52			alle Preise in Euro / all prices in Euro
DN	Einfach/Simple	Doppelt/Double	
	*	*	

Maße in mm / dimensions in mm				
A	B	C	D	E
M12x1				

Nennschaltabstand: 4mm / Betriebsspannung: 5-25V / Gehäusematerial: PBTB / Umgebungstemperatur: 25-100°C
 Schutzklasse: IP 68 - DIN 40050
 Sensing distance: 4mm / Operation voltage: 5-25V / Housing material: PBTB / Ambient temperature: 25-100°C
 Protection class: IP 68 - DIN 40050

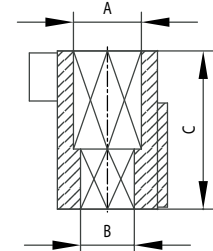


Kupplungsstück für pneumatische Antriebe für Prozess-Scheibenventile

Coupling piece for pneumatic actuators for process butterfly valves

alle Preise in Euro / all prices in Euro		
DN	Art.-Nr.	1.4301/304
25-80	F4361 09	*
100	F4361 09	*

Maße in mm / dimensions in mm				
A	B	C	D	E
12	9,5	39,5		
12	12	39,5		



Steuerkopf für pneumatischen Antrieb Control head for pneumatic actuator

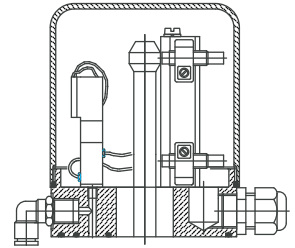
Art.-Nr. 03174	alle Preise in Euro / all prices in Euro
DN	.
	*

Maße in mm / dimensions in mm

A	B	C	D	E
102				127

Komplett mit sämtlichen Kabelanschlüssen. Steuerventil: wahlweise als 3/2- bzw. 5/2-Wege-Magnetventil. Ein- oder zweifacher Näherungsschalter oder Mikroschalter. Optional ein oder zwei Leuchtdioden am Gehäuse zur visuellen Stellungsanzeige.

Complete with all cable connections. Control valve: by choice 3/2- or 5/2-way solenoid valve. One or two proximity or micro switches. Optionally one or two illuminated diodes at the casing for an individual position indication.



Stellungsregler „DigiPos“ Positioner „DigiPos“

DigiPos-Stellungsregler für Regelventile *DigiPos positioner for modulating valves*

Art.-Nr. DigiPos	alle Preise in Euro / all prices in Euro
DN	.
für/for	
M02	1.280,00
M1-2	1.280,00
M3-4	1.280,00
M9-10	1.280,00
Drehantrieb	1.280,00
Kolbenantrieb	1.280,00

Maße in mm / dimensions in mm

A	B	C	D	E
		Hub		
102		20		141
102		20		141
102		30		141
102		60		141
102				141
102				141

Elektronischer Stellungsregler für Regelventile und Scheiben-Regelventile, Eingangssignal 4-20mA
Electronic positioner for modulating and butterfly modulating valves, Input signal 4-20mA

