

Schrägsitzventil Typ VS, LS

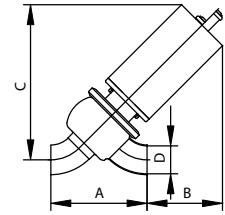
Inclined seat valve type VS, LS

alle Preise in Euro / all prices in Euro

DN	Art.-Nr.	1.4301/304		1.4404/316 L	
		manuell	pneum.	manuell	pneum.
25	5021	544,50	758,30	626,30	839,90
32	5029	544,50	758,30	626,30	839,90
40	5022	544,50	758,30	626,30	839,90
50	5023	603,30	816,90	693,80	907,40
65	5024	743,60	957,30	855,20	1.068,80
80	5025	837,10	1.287,70	962,70	1.413,20
100	5026	1.045,60	1.496,20	1.202,50	1.653,00

Maße in mm / dimensions in mm

A	B	C	D	E
152	143	274	26	
130	158	266	32	
143	143	259	38	
169	133	273	50	
191	138	296	66	
227	130	320	81	
262	120	340	100	



Sitzventil Typ VS, L

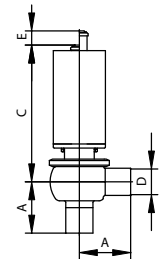
Seat valve type VS, L

alle Preise in Euro / all prices in Euro

DN	Art.-Nr.	1.4301/304		1.4404/316 L	
		manuell	pneum.	manuell	pneum.
25	5001	532,10	745,90	612,00	825,60
32	5009	532,10	745,90	612,00	825,60
40	5002	532,10	745,90	612,00	825,60
50	5003	586,70	800,30	674,70	888,30
65	5004	723,00	936,60	831,30	1.045,00
80	5005	812,30	1.262,70	934,10	1.384,60
100	5006	1.016,70	1.467,20	1.169,20	1.619,70

Maße in mm / dimensions in mm

A	B	C	D	E
90		264	26	28
90		264	32	28
90		264	38	28
100		270	50	28
115		278	66	28
130		285	81	28
140		306	100	28



Auslaufventil Typ VS, LS

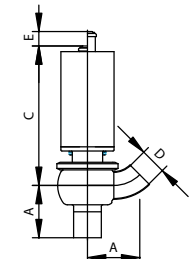
Outlet valve type VS, LS

alle Preise in Euro / all prices in Euro

DN	Art.-Nr.	1.4301/304		1.4404/316 L	
		manuell	pneum.	manuell	pneum.
25	5081	538,40	752,00	619,10	832,70
32	5089	538,40	752,00	619,10	832,70
40	5082	538,40	752,00	619,10	832,70
50	5083	595,00	808,70	684,20	897,90
65	5084	733,30	946,90	843,30	1.056,90
80	5085	825,00	1.275,30	948,40	1.398,90
100	5086	1.031,20	1.481,60	1.185,90	1.636,30

Maße in mm / dimensions in mm

A	B	C	D	E
90		264	26	28
90		264	32	28
90		264	38	28
100		270	50	28
115		278	66	28
130		285	81	28
140		306	100	28



Sitzventil Typ VS, T

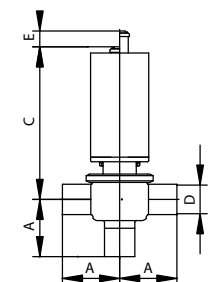
Seat valve type VS, T

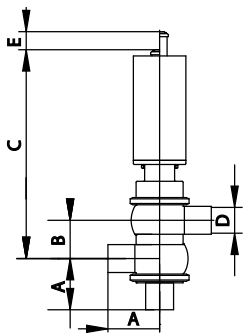
alle Preise in Euro / all prices in Euro

DN	Art.-Nr.	1.4301/304		1.4404/316 L	
		manuell	pneum.	manuell	pneum.
25	5041	559,10	772,70	642,90	856,50
32	5049	559,10	772,70	642,90	856,50
40	5042	559,10	772,70	642,90	856,50
50	5043	617,70	831,30	710,30	923,90
65	5044	760,10	973,80	874,20	1.087,80
80	5045	857,70	1.308,30	986,40	1.436,90
100	5046	1.074,50	1.525,10	1.235,70	1.686,20

Maße in mm / dimensions in mm

A	B	C	D	E
90		264	26	28
90		264	32	28
90		264	38	28
100		270	50	28
115		278	66	28
130		285	81	28
140		306	100	28





Sitzventil Typ VS, LL

Seat valve type VS, LL

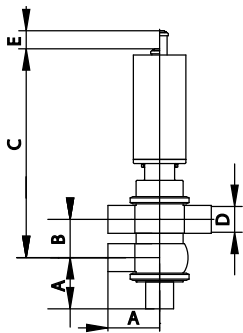
alle Preise in Euro / all prices in Euro

DN	Art.-Nr.	1.4301/304		1.4404/316 L	
		manuell	pneum.	manuell	pneum.
25	5101A	768,30	982,00	883,60	1.097,20
32	5109A	768,30	982,00	883,60	1.097,20
40	5102A	768,30	982,00	883,60	1.097,20
50	5103A	886,50	1.100,10	1.019,40	1.233,10
65	5104A	1.165,90	1.379,60	1.340,70	1.554,50
80	5105A	1.243,80	1.694,40	1.430,40	1.880,90
100	5106A	1.689,00	2.139,50	1.942,30	2.392,90

Maße in mm / dimensions in mm

A	B	C	D	E
90	75	339	26	28
90	75	340	32	28
90	75	339	38	28
110	85	355	50	28
115	106	384	66	28
130	116	401	81	28
140	136	442	100	28

Optionen: eingeschweißter Sitz; Druckschlagsicherung (siehe Tabelle "Optionen")
Options: valve seat welded-on; water hammer protection (see table "Options")



Sitzventil Typ VS, TL

Seat valve type VS, TL

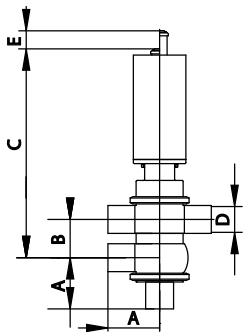
alle Preise in Euro / all prices in Euro

DN	Art.-Nr.	1.4301/304		1.4404/316 L	
		manuell	pneum.	manuell	pneum.
25	5121A	795,30	1.008,90	914,50	1.128,10
32	5129A	795,30	1.008,90	914,50	1.128,10
40	5122A	795,30	1.008,90	914,50	1.128,10
50	5123A	917,60	1.131,20	1.055,20	1.268,80
65	5124A	1.203,10	1.416,80	1.383,60	1.597,20
80	5125A	1.289,40	1.739,80	1.482,70	1.933,20
100	5126A	1.746,80	2.197,30	2.008,70	2.459,30

Maße in mm / dimensions in mm

A	B	C	D	E
90	75	339	26	28
90	75	339	32	28
90	75	339	38	28
100	85	355	50	28
115	106	384	66	28
130	116	401	81	28
140	136	442	100	28

Optionen: eingeschweißter Sitz; Druckschlagsicherung (siehe Tabelle "Optionen")
Options: valve seat welded-on; water hammer protection (see table "Options")



Sitzventil Typ VS, LT

Seat valve type VS, LT

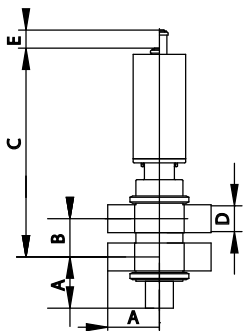
alle Preise in Euro / all prices in Euro

DN	Art.-Nr.	1.4301/304		1.4404/316 L	
		manuell	pneum.	manuell	pneum.
25	5141A	795,20	1.008,90	914,50	1.128,10
32	5149A	795,20	1.008,90	914,50	1.128,10
40	5142A	795,20	1.008,90	914,50	1.128,10
50	5143A	917,60	1.131,20	1.055,30	1.268,80
65	5144A	1.203,20	1.416,80	1.383,60	1.597,60
80	5145A	1.289,50	1.739,80	1.482,60	1.933,80
100	5146A	1.746,00	2.197,00	2.008,00	2.459,30

Maße in mm / dimensions in mm

A	B	C	D	E
90	75	339	26	28
90	75	340	32	28
90	75	339	38	28
100	85	355	50	28
115	106	384	66	28
130	116	401	81	28
140	136	442	100	28

Optionen: eingeschweißter Sitz; Druckschlagsicherung (siehe Tabelle "Optionen")
Options: valve seat welded-on; water hammer protection (see table "Options")



Sitzventil Typ VS, TT

Seat valve type VS, TT

alle Preise in Euro / all prices in Euro

DN	Art.-Nr.	1.4301/304		1.4404/316 L	
		manuell	pneum.	manuell	pneum.
25	5161A	822,20	1.035,80	945,50	1.159,20
32	5169A	822,50	1.035,80	945,60	1.159,20
40	5162A	822,20	1.035,80	945,40	1.159,10
50	5163A	948,60	1.162,20	1.090,80	1.304,40
65	5164A	1.240,40	1.454,00	1.426,40	1.640,00
80	5165A	1.334,80	1.785,30	1.535,00	1.985,60
100	5166A	1.804,60	2.255,20	2.075,30	2.525,90

Maße in mm / dimensions in mm

A	B	C	D	E
90	75	339	26	28
90	75	340	32	28
90	75	339	38	28
100	85	355	50	28
115	106	384	66	28
130	116	401	81	28
140	136	442	100	28

Optionen: eingeschweißter Sitz; Druckschlagsicherung (siehe Tabelle "Optionen")
Options: valve seat welded-on; water hammer protection (see table "Options")

Schrägsitzventil Typ VS, LS, Zoll

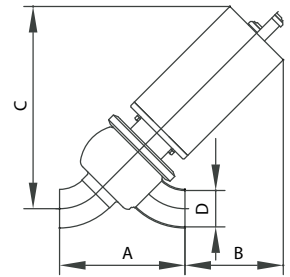
Inclined seat valve type VS, LS, inch

alle Preise in Euro / all prices in Euro

DN	Art.-Nr.	1.4301/304		1.4404/316 L	
		manuell	pneum.	manuell	pneum.
1"	5031	544,50	718,30	626,30	839,90
1 1/2"	5032	544,50	758,30	626,30	839,90
2"	5033	603,30	816,90	693,80	907,40
2 1/2"	5034	855,20	957,30	825,20	1.068,20
3"	5035	837,10	1.287,80	962,70	1.413,20
4"	5036	1.045,60	1.496,20	1.202,50	1.653,00

Maße in mm / dimensions in mm

A	B	C	D	E
112	176	273	22.1	
130	166	276	34.8	
169	140	278	47.5	
204	125	291	60.2	
232	124	329	73.1	
335	85	357	97.4	



Sitzventil Typ VS, L, Zoll

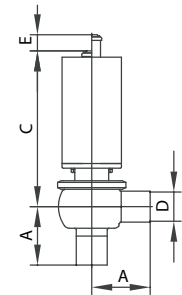
Seat valve type VS, L, inch

alle Preise in Euro / all prices in Euro

DN	Art.-Nr.	1.4301/304		1.4404/316 L	
		manuell	pneum.	manuell	pneum.
1"	5011	532,20	745,90	612,00	825,60
1 1/2"	5012	532,20	745,90	612,00	825,60
2"	5013	586,70	800,60	674,70	888,30
2 1/2"	5014	723,00	936,60	831,30	1.045,00
3"	5015	812,30	1.262,70	934,10	1.384,60
4"	5016	1.016,70	1.467,20	1.169,50	1.619,80

Maße in mm / dimensions in mm

A	B	C	D	E
85		264	22.1	28
85		264	34.8	28
100		270	47.5	28
110		284	60.2	28
130		302	73.1	28
140		306	97.4	28



Auslaufventil Typ VS, LS, Zoll

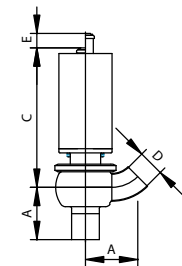
Outlet valve type VS, LS, inch

alle Preise in Euro / all prices in Euro

DN	Art.-Nr.	1.4301/304		1.4404/316 L	
		manuell	pneum.	manuell	pneum.
1"	5091	538,40	752,00	619,20	832,70
1 1/2"	5092	832,40	752,00	619,20	532,40
2"	5093	595,00	808,70	684,20	897,90
2 1/2"	5094	733,30	946,90	843,30	1.056,90
3"	5095	824,70	1.275,30	948,40	1.398,90
4"	5096	1.031,20	1.481,60	1.185,90	1.636,30

Maße in mm / dimensions in mm

A	B	C	D	E
90		264	22.1	28
90		264	34.8	28
100		270	47.5	28
115		278	60.2	28
130		285	72.9	28
140		306	97.4	28



Sitzventil Typ VS, T, Zoll

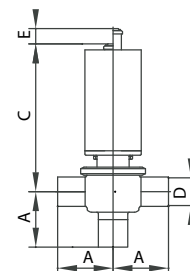
Seat valve type VS, T, inch

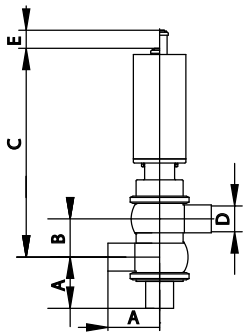
alle Preise in Euro / all prices in Euro

DN	Art.-Nr.	1.4301/304		1.4404/316 L	
		manuell	pneum.	manuell	pneum.
1"	5051	559,10	772,70	642,90	856,50
1 1/2" 8,7	5052	559,20	772,70	642,90	856,50
2"	5053	617,70	831,30	710,30	923,90
2 1/2" 12,7	5054	760,10	973,80	874,20	1.087,80
3"	5055	857,70	1.308,30	986,40	1.437,00
4"	5056	1.074,50	1.525,10	1.235,70	1.686,30

Maße in mm / dimensions in mm

A	B	C	D	E
85		264	22.1	28
85		264	34.8	28
100		270	47.5	28
110		284	60.2	28
130		302	73.1	28
140		306	97.4	28





Sitzventil Typ VS, LL, Zoll

Seat valve type VS, LL, inch

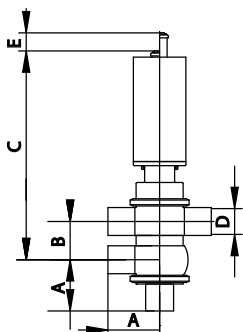
alle Preise in Euro / all prices in Euro

DN	Art.-Nr.	1.4301/304		1.4404/316 L	
		manuell	pneum.	manuell	pneum.
1"	5111A	768,30	982,00	883,60	1.097,70
1 1/2"	5112A	768,30	982,00	883,60	1.097,70
2"	5113A	886,50	1.100,20	1.019,40	1.233,10
2 1/2"	5114A	1.165,90	1.379,60	1.340,70	1.554,50
3"	5115A	1.243,80	1.694,40	1.430,40	1.880,90
4"	5116A	1.689,00	2.139,50	1.942,30	2.392,90

Maße in mm / dimensions in mm

A	B	C	D	E
85	75	339	22.1	28
85	75	339	34.8	28
100	85	355	47.5	28
110	100	384	60.2	28
130	128	401	72.9	28
140	136	442	97.4	28

Optionen: eingeschweißter Sitz; Druckschlagsicherung (siehe Tabelle "Optionen")
Options: valve seat welded-on; water hammer protection (see table "Options")



Sitzventil Typ VS, TL, Zoll

Seat valve type VS, TL, inch

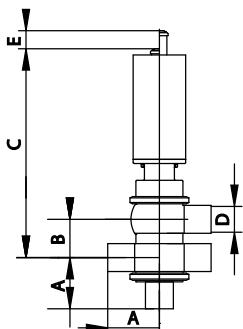
alle Preise in Euro / all prices in Euro

DN	Art.-Nr.	1.4301/304		1.4404/316 L	
		manuell	pneum.	manuell	pneum.
1"	5131A	795,20	1.008,90	914,50	1.128,20
1 1/2"	5132A	795,20	1.008,90	914,50	1.128,20
2"	5133A	917,60	1.131,20	1.055,20	1.268,80
2 1/2"	5134A	1.203,10	1.416,70	1.383,60	1.597,20
3"	5135A	1.289,40	1.739,80	1.482,70	1.933,20
4"	5136A	1.746,80	2.197,30	2.008,90	2.459,30

Maße in mm / dimensions in mm

A	B	C	D	E
85	75	339	22.1	28
85	75	339	34.8	28
100	85	355	47.5	28
110	100	384	60.2	28
130	128	401	72.9	28
140	136	442	97.4	28

Optionen: eingeschweißter Sitz; Druckschlagsicherung (siehe Tabelle "Optionen")
Options: valve seat welded-on; water hammer protection (see table "Options")



Sitzventil Typ VS, LT, Zoll

Seat valve type VS, LT, inch

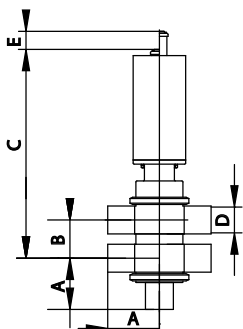
alle Preise in Euro / all prices in Euro

DN	Art.-Nr.	1.4301/304		1.4404/316 L	
		manuell	pneum.	manuell	pneum.
1"	5151A	795,20	1.008,90	914,60	1.128,20
1 1/2"	5152A	795,20	1.008,90	914,60	1.128,20
2"	5153A	917,60	1.131,20	1.055,20	1.268,80
2 1/2"	5154A	1.203,10	1.416,70	1.383,60	1.597,20
3"	5155A	1.289,40	1.739,80	1.482,70	1.933,20
4"	5156A	1.746,80	2.197,30	2.008,90	2.459,30

Maße in mm / dimensions in mm

A	B	C	D	E
85	75	339	22.1	28
85	75	339	34.8	28
100	85	355	47.5	28
110	100	384	60.2	28
130	128	401	72.9	28
140	136	442	97.4	28

Optionen: eingeschweißter Sitz; Druckschlagsicherung (siehe Tabelle "Optionen")
Options: valve seat welded-on; water hammer protection (see table "Options")



Sitzventil Typ VS, TT, Zoll

Seat valve type VS, TT, inch

alle Preise in Euro / all prices in Euro

DN	Art.-Nr.	1.4301/304		1.4404/316 L	
		manuell	pneum.	manuell	pneum.
1"	5171A	822,10	1.035,80	945,40	1.159,10
1 1/2"	5172A	822,10	1.035,80	945,40	1.159,10
2"	5173A	948,60	1.162,20	1.090,80	1.304,40
2 1/2"	5174A	1.240,40	1.454,00	1.426,40	1.640,00
3"	5175A	1.334,80	1.785,30	1.535,00	1.985,50
4"	5176A	1.804,60	2.255,00	2.075,30	2.525,90

Maße in mm / dimensions in mm

A	B	C	D	E
85	75	339	22.1	28
85	75	339	34.8	28
100	85	355	47.5	28
110	100	384	60.2	28
130	128	401	72.9	28
140	136	442	97.4	28

Optionen: eingeschweißter Sitz; Druckschlagsicherung (siehe Tabelle "Optionen")
Options: valve seat welded-on; water hammer protection (see table "Options")

Stellungsregler „DigiPos“

Positioner „DigiPos“

DigiPos–Stellungsregler für Regelventile

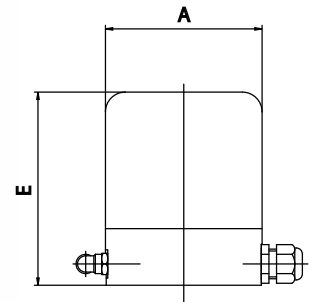
DigiPos positioner for modulating valves

Art.-Nr. DigiPos	alle Preise in Euro / all prices in Euro
DN	.
für/for	
M02	1.280,00
M1-2	1.280,00
M3-4	1.280,00
M9-10	1.280,00
Drehantrieb	1.280,00
Kolbenantrieb	1.280,00

Maße in mm / dimensions in mm

A	B	C	D	E
		Hub		
102		20		141
102		20		141
102		30		141
102		60		141
102				141
102				141

Elektronischer Stellungsregler für Regelventile und Scheiben-Regelventile, Eingangssignal 4-20mA
Electronic positioner for modulating and butterfly modulating valves, Input signal 4-20mA



Steuerkopf für pneumatischen Antrieb Control head for pneumatic actuator

Art.-Nr. 03174	alle Preise in Euro / all prices in Euro
DN	.
	*

Maße in mm / dimensions in mm

A	B	C	D	E
102				127

Komplett mit sämtlichen Kabelanschlüssen. Steuerventil: wahlweise als 3/2- bzw. 5/2-Wege-Magnetventil. Ein- oder zweifacher Näherungsschalter oder Mikroschalter. Optional ein oder zwei Leuchtdioden am Gehäuse zur visuellen Stellungsanzeige.

Complete with all cable connections. Control valve: by choice 3/2- or 5/2-way solenoid valve. One or two proximity or micro switches. Optionally one or two illuminated diodes at the casing for an individual position indication.

